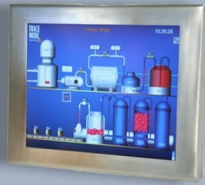


# Industrial Computing Products and Services

Panel PC's



Industrial PC's



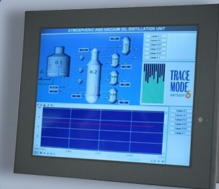
Electronic Design



SBC's



Industrial Displays



## Why Choose DSL?

- ✓ Lifetime technical support
- ✓ Fully customisable products
- ✓ Product branding (bezel colours + logos)
- ✓ Free pre-installation of OS and software

## Our Services

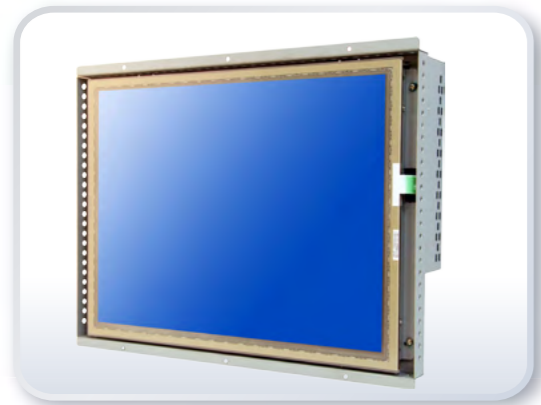
- ✓ Electronic Design
- ✓ Production Management
- ✓ Assembly and test
- ✓ Bespoke BIOS creation



[sales@dsl-ltd.co.uk](mailto:sales@dsl-ltd.co.uk)

or call us on +44 (0)1462 675530



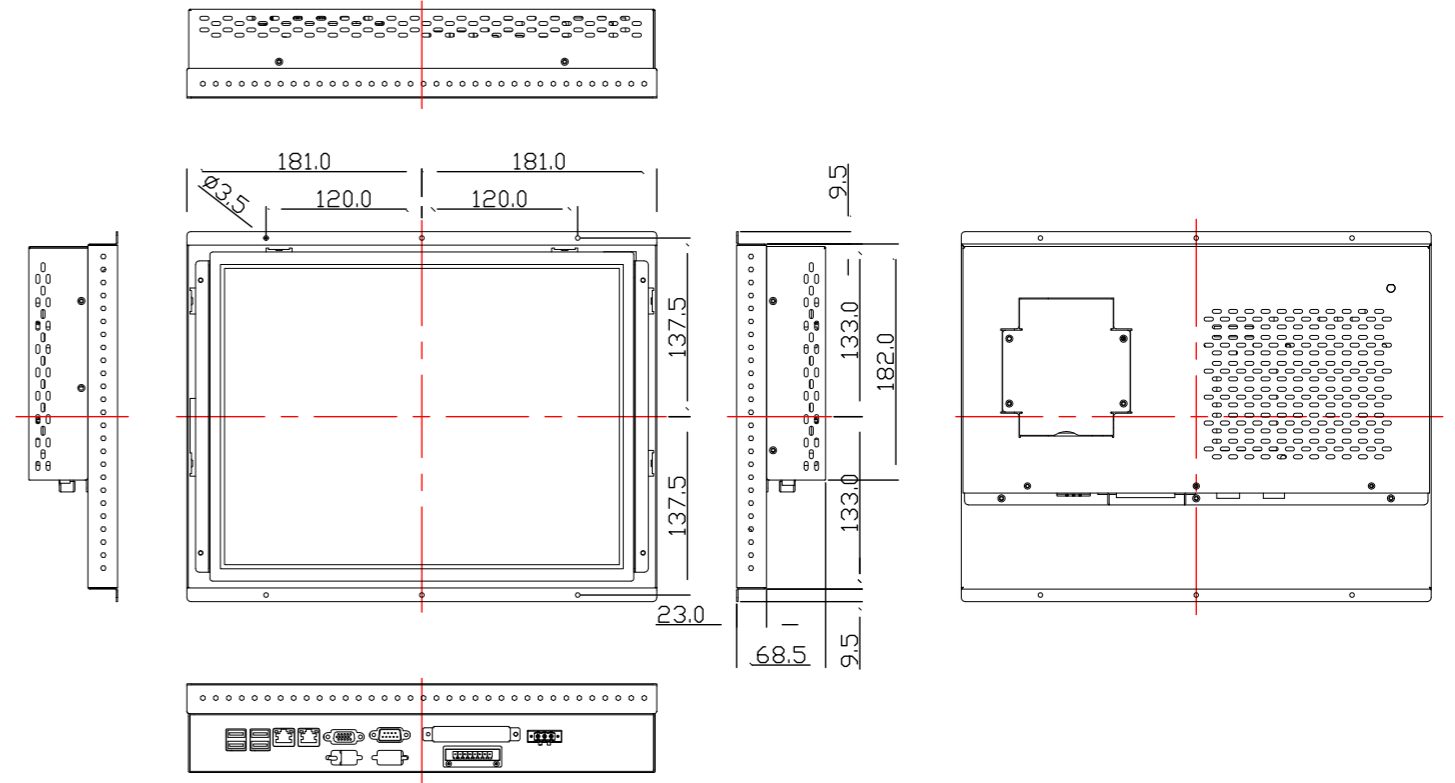


### Features

- Open Frame, Fanless Design
- Cost Effective
- Touch Screen for Option
- All Solid Capacitor Motherboard
- Wide Range DC 11~32V Power Input for Option



### Dimension



### Specifications

System	
Processor	Intel Atom N270 processor
System Memory	1GB DDR2 SODIMM 533 MHz ,up to 2GB, default 1GB
System Chipset	Intel 945GSE + Intel ICH7M
External I/O Port	<ul style="list-style-type: none"> <li>4 x USB 2.0</li> <li>2 x GbE RJ-45 LAN port</li> <li>1 x DB-15 VGA</li> <li>1 x DB-9 RS-232</li> <li>2 x DB-9 for RS-232 or optional RS-422/485</li> <li>1 x 3 Pin terminal block DC power input</li> <li>1 x 8 Pin terminal block, 2 Pin for power on/of f connector, 1 Pin for ground, 1 Pin as VCC, and 2 in/out DIO</li> <li>1 x CF slot (external) for option</li> </ul>
Storage	<ul style="list-style-type: none"> <li>1 x 2.5" SATA HDD</li> <li>1 x CF Slot (Internal)</li> </ul>
Expansion Slots	None
OS Support	Windows XP Professional, XP Embedded

LCD	
Display Type	15" TFT-LCD
Max. Resolution	1024x768
Max. Color	16.7M
Luminance (cd/m <sup>2</sup> )	350
View Angle	H:125° / V:140°
Backlight Lifetime	50,000hrs

Touch Screen	
Type	Resistive Touch (Option)
Light Transmission	80%

Power Supply	
Power Input	DC 12V, DC 11~32V for option

Mechanical	
Construction	Steel molding housing
IP Rating	None
Mounting	Panel mount
Dimension	362(W)x266(H)x68.5(D)mm
Net Weight	TBD

Environmental	
Operating Temperature	0~40 °C without fan / 0~60 °C with fan
Storage Temperature	-20~70 °C
Storage Humidity	10~90% @40 °C non-condensing
Certificate	CE/FCC Class A

Ordering Information	
OPC-5157	15" XGA 1024 x768 fanless open frame PC with Atom N270 1.6G CPU, 1GB DDR2 533MHZ Memory, 12V DC input with adaptor, steel enclosure