

Industrial Computing Products and Services

Panel PC's



Industrial PC's



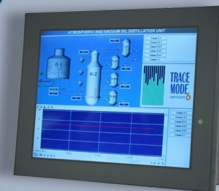
Electronic Design



SBC's



Industrial Displays



Why Choose DSL?

- ✓ Lifetime technical support
- ✓ Fully customisable products
- ✓ Product branding (bezel colours + logos)
- ✓ Free pre-installation of OS and software

Our Services

- ✓ Electronic Design
- ✓ Production Management
- ✓ Assembly and test
- ✓ Bespoke BIOS creation



sales@dsl-ltd.co.uk

or call us on +44 (0)1462 675530



NEW

APC-3X82/APC-3X83 Series

Performance IP 42/Intel Atom D525



APC-3X82/APC-3X83 Series

APC-3582/APC-3782/APC-3982
APC-3283/APC-3583/APC-3783/APC-3983



APC-3X82



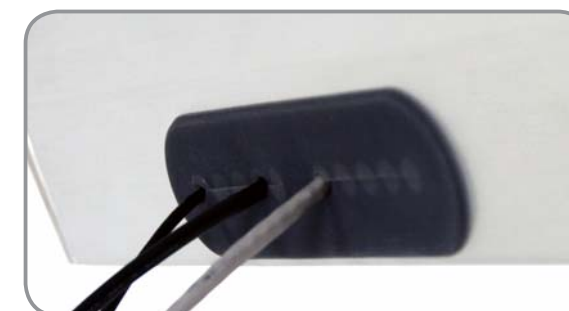
APC-3X82

Reliable Cable Bracket Design



APC-3X83 Series

Steel Enclosure, Black Color



APC-3X82

IP 42 Rubber Cover

Features



Slim, Fanless Design



All Solid Capacitor
Motherboard



IP 65 Except I/O Side



Wide Range DC 11~32V
Power Input



Low Power
Consumption

NEW

APC-3X82/APC-3X83 Series

Performance IP42/Intel Atom D525

Specifications

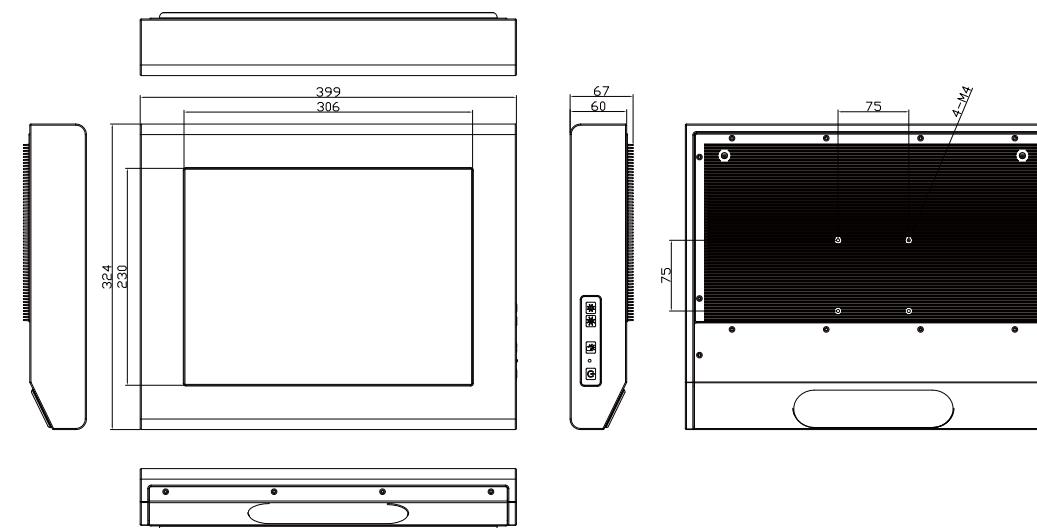
Model No.	APC-3282/3283 Q1/2012	APC-3582/3583	APC-3782/3783 Q1/2012	APC-3982/3983
System				
Processor	Intel Atom D525			
System Memory	1 x 204 Pin DDR3 800 MHz SO-DIMM slot, default 2GB, max. 4GB			
System Chipset	Intel ICH8M			
External I/O Port	<ul style="list-style-type: none"> • 4 x USB 2.0 • 2 x RJ-45 LAN • 1 x DB-15 for RS-232 and RS-422/485 (1 to 2 Ycable) • 1 x DB-9 RS-232 • 1 x DC Power input terminal block connector • 1 x 7 Pin terminal block for 2n/2out/1Ground/Switch 	<ul style="list-style-type: none"> • 4 x USB 2.0 • 2 x RJ-45 LAN • 1 x DB-15 for RS-232 and RS-422/485 (1 to 2 Ycable) • 1 x DB-9 RS-232 • 1 x DC Power input terminal block connector • 1 x 7 Pin terminal block for 2n/2out/1Ground/Switch 	<ul style="list-style-type: none"> • 4 x USB 2.0 • 2 x RJ-45 LAN • 1 x DB-15 for RS-232 and RS-422/485 (1 to 2 Ycable) • 1 x DB-9 RS-232 • 1 x DC Power input terminal block connector • 1 x 7 Pin terminal block for 2n/2out/1Ground/Switch 	<ul style="list-style-type: none"> • 4 x USB 2.0 • 2 x RJ-45 LAN • 1 x DB-15 for RS-232 and RS-422/485 (1 to 2 Ycable) • 1 x DB-9 RS-232 • 1 x DC Power input terminal block connector • 1 x 7 Pin terminal block for 2n/2out/1Ground/Switch
Storage	<ul style="list-style-type: none"> • 1 x 2.5" SATA HDD • 1 x CF Slot (internal) 	<ul style="list-style-type: none"> • 1 x 2.5" SATA HDD • 1 x CF Slot (Internal), 1 x CF Slot external (option) 		
Expansion Slots	None			
OS Support	Windows XP Embedded, Windows Embedded Standard 7			
LCD				
Display Type	12" TFT-LCD	15" TFT-LCD	17" TFT-LCD	19" TFT-LCD
Max. Resolution	800x600	1024x768	1280x1024	1280x1024
Max. Color	262K		16.7M	
Luminance (cd/m ²)	350	400 (APC-3582) 350 (APC-3583)	450 (APC-3982) 300 (APC-3983)	300
View Angle	H:140° / V:110°	H:160° / V:140° (APC-3582) H:125° / V:140° (APC-3583)	H:170° / V:160°	H:160° / V:160°
Backlight Lifetime	50,000 hrs			
Touch Screen				
Type	Resistive (optional) USB Interface			
Light Transmission	80%			
Power Supply				
Power Input	DC 11~32V			
Mechanical				
Construction	Stainless Steel Housing (APC-3X82) / Steel Housing (APC-3X83)			
IP Rating	Front panel IP65/ 6 sides IP42 with waterproof kit			
Mounting	VESA 75 x 75 Mount	VESA 75 x 75 Mount	VESA 75 x 75 Mount	VESA 100 x 100 Mount
Dimension	TBD	398(W)x316(H)x56(D) mm	TBD	470(W)x388.6(H)x71.8(D)
Environmental				
Operating Temperature	0~50 °C			
Storage Temperature	-20~60°C			
Storage Humidity	10~90% @40 °C non-condensing			
Certificate	CE/FCC Class A			

APC-3X82/APC-3X83 Series

APC-3582/APC-3782/APC-3982
APC-3283/APC-3583/APC-3783/APC-3983
unit:mm

Dimensions

APC-3582/APC-3583



APC-3982/APC-3983

