

# Industrial Computing Products and Services

Panel PC's



Industrial PC's



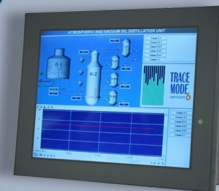
Electronic Design



SBC's



Industrial Displays



## Why Choose DSL?

- ✓ Lifetime technical support
- ✓ Fully customisable products
- ✓ Product branding (bezel colours + logos)
- ✓ Free pre-installation of OS and software

## Our Services

- ✓ Electronic Design
- ✓ Production Management
- ✓ Assembly and test
- ✓ Bespoke BIOS creation



[sales@dsl-ltd.co.uk](mailto:sales@dsl-ltd.co.uk)

or call us on +44 (0)1462 675530



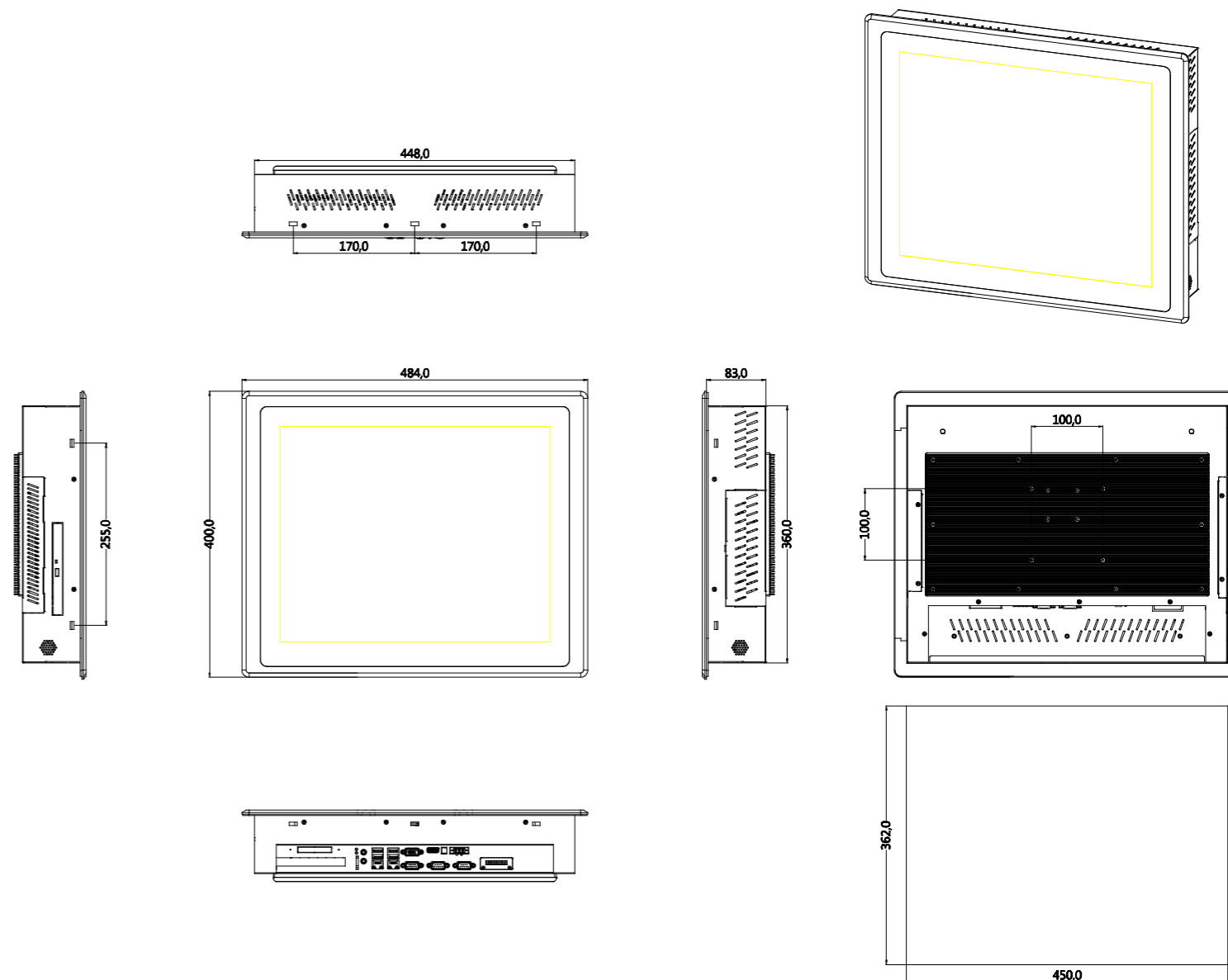


## Features

- Fanless Design, with System Fan for option
- Flat Panel Design with Projected Capacitive Touch
- Support 1 x PCI Slot
- Support RAID 0, 1
- 9~32V DC Wide Range Power Input



## Dimension



## Specifications

### System

Processor	Intel Socket P Core 2 Duo Processor FSB 667/800/1066 MHz, default Intel P8400 2.26GHz
System Memory	2 x 204 Pin DDR3 SO-DIMM, up to 8GB SDRAM, default 2GB
System Chipset	Intel GM45 + ICH9M-E
External I/O Port	4 x USB 2.0 connectors 2 x GbE LAN connectors 1 x VGA 2 x RS-232 (COM1/2) 1 x terminal block for additional power switch 2 x LED light for power and HDD indication 1 x Audio line out/ MIC in 1 x DB-9 RS-422/485, default RS-485 (COM3) for option 1 x 8 Pin terminal block connector for VCC/Ground/6XGPIO 1 x 3 Pin DC Power input terminal block
Storage	2 x 2.5" SATA HDD (one HDD as standard, two HDDs as option for RAID) 1 x External CF(default)/CFast Slot for option
CD/DVD-R Device	1 x Slim CD/DVD RW Device for option (Not available if 2 HDD and CF have been used)
Wireless LAN	mini-PCIe interface for option
Expansion Slots	1 x PCI / 1 x PCIe x1 for option
Other optional Function	2 x 2W Speaker
Power Input	9~32V DC
Touch Screen	Projected Capacitive Touch
Light Transmission	90%
OS Support	Windows XP Professional, XP Embedded, Windows Embedded Standard 7, Windows 7 Pro for Embedded

### LCD

Display Type	19" TFT-LCD
Max. Resolution	1280x1024
Max. Color	16.2M
Luminance (cd/m <sup>2</sup> )	350
View Angle	H:170° / V:160°
Backlight Lifetime	50,000 hrs

### Mechanical

Construction	Aluminum front bezel and steel chassis
IP Rating	Front Panel IP65
Mounting	Panel / VESA 100x100 Mount
Dimension	484x416x83
Net Weight	11.2kgs

### Environmental

Operating Temperature	-10~50 °C
Storage Temperature	-20~60 °C
Storage Humidity	10~90% @40 °C non-condensing
Certificate	CE/FCC Class A

Mounting Hole