

Industrial Computing Products and Services

Panel PC's



Industrial PC's



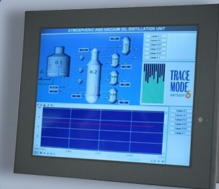
Electronic Design



SBC's



Industrial Displays



Why Choose DSL?

- ✓ Lifetime technical support
- ✓ Fully customisable products
- ✓ Product branding (bezel colours + logos)
- ✓ Free pre-installation of OS and software

Our Services

- ✓ Electronic Design
- ✓ Production Management
- ✓ Assembly and test
- ✓ Bespoke BIOS creation



sales@dsl-ltd.co.uk

or call us on +44 (0)1462 675530





Features

- Intel Atom D525 processor, fan less design
- IP65 Flat Panel Design with projected capacitive touch
- Aluminum front bezel
- Accessible 2.5" SATA HDD space
- 11~32V DC Wide Range DC Power Input



Specifications

System

Processor	Intel Atom D525 1.8 GHz DMI processor
System Memory	1 x DDR3 SO-DIMM Slot, default 2GB
System Chipset	Intel ICH8M
External I/O Port	4 x USB 2.0 ports 2 x RJ-45 ports (GbE) 1 x DB-15 VGA 2 x DB-9 RS-232 COM1 and COM2 1 x DB-9 RS-422/485 COM3 default RS-485 1 x 3 pins terminal block DC power input 1 x 8 pins terminal block 2in/2out GPIO, power switch ±, VCC and ground 1 x Audio Line-out 3.5mm jack
Storage	1 x Accessible 2.5" SATA HDD 1 x External CF Slot
Expansion Slots	None
Power Input	DC 11~32V
Touch Screen	Projected Capacitive Touch
Light Transmission	90%
OS Support	Windows CE 6.0, XP Pro, XP Embedded, Windows embedded standard 7

LCD

Display Type	15" TFT LCD
Max. Resolution	1024x768
Max. Color	262K
Luminance (cd/m ²)	400
View Angle	H: 160/V: 145
Backlight Lifetime	50,000hrs

Mechanical

Construction	Aluminum front bezel and steel chassis
IP Rating	NEMA 4/ IP 65 compliant front panel
Mounting	Panel/VESA 75x75 Mount
Dimension	410(W)x310(H)x73.5(D) mm
Net Weight	6.3kgs

Environmental

Operating Temperature	-10~50°C
Storage Temperature	-20~60°C
Storage Humidity	10 to 90%@ 40°C, non-condensing
Certificate	CE / FCC Class A

Dimension

