

Industrial Computing Products and Services

Panel PC's



Industrial PC's



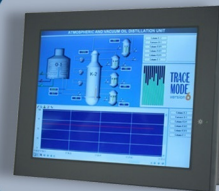
Electronic Design



SBC's



Industrial Displays



Why Choose DSL?

- ✓ Lifetime technical support
- ✓ Fully customisable products
- ✓ Product branding (bezel colours + logos)
- ✓ Free pre-installation of OS and software

Our Services

- ✓ Electronic Design
- ✓ Production Management
- ✓ Assembly and test
- ✓ Bespoke BIOS creation



sales@dsl-ltd.co.uk

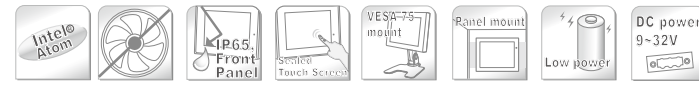
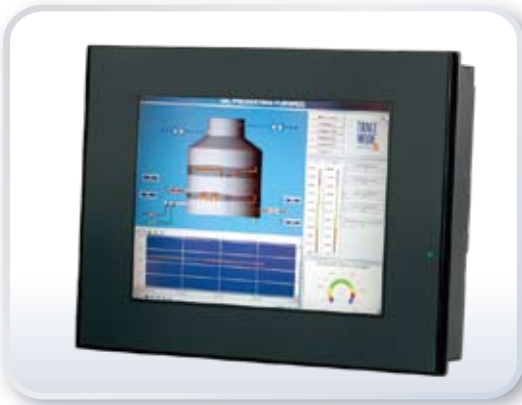
or call us on +44 (0)1462 675530



Features



- Fanless design
- Intel® Atom™ Z510 1.1GHz CPU built-in, upgrade to Z530 1.6GHz CPU
- 10.4" High brightness TFT LCD with resolution of 800x600
- NEMA 4/ IP 65 compliant front panel
- Sealed resistive touch screen
- 1GB DDR2 400MHz DRAM built-in
- DC 9~32V wide-range power input



Specifications

System	
Processor	Intel® Atom™ Z510 1.1GHz CPU Default, upgrade to Z530 1.6GHz CPU
System Memory	1GB DDR2 400MHz DRAM default
System Chipset	Intel® US15W
External I/O Port	- 2 x USB 2.0 ports - 2 x RJ-45 LAN ports - 1 x RS232 (COM1) - 1 x RS422/485 (COM2) - 1 x DB 9 port optional for VGA or COM3
Solid Storage Disk	1 x 2.5" PATA HDD, 1 x internal CF slot
Expansion Slots	None
OS Support	Windows® CE 5.0, XP Pro, XP embedded

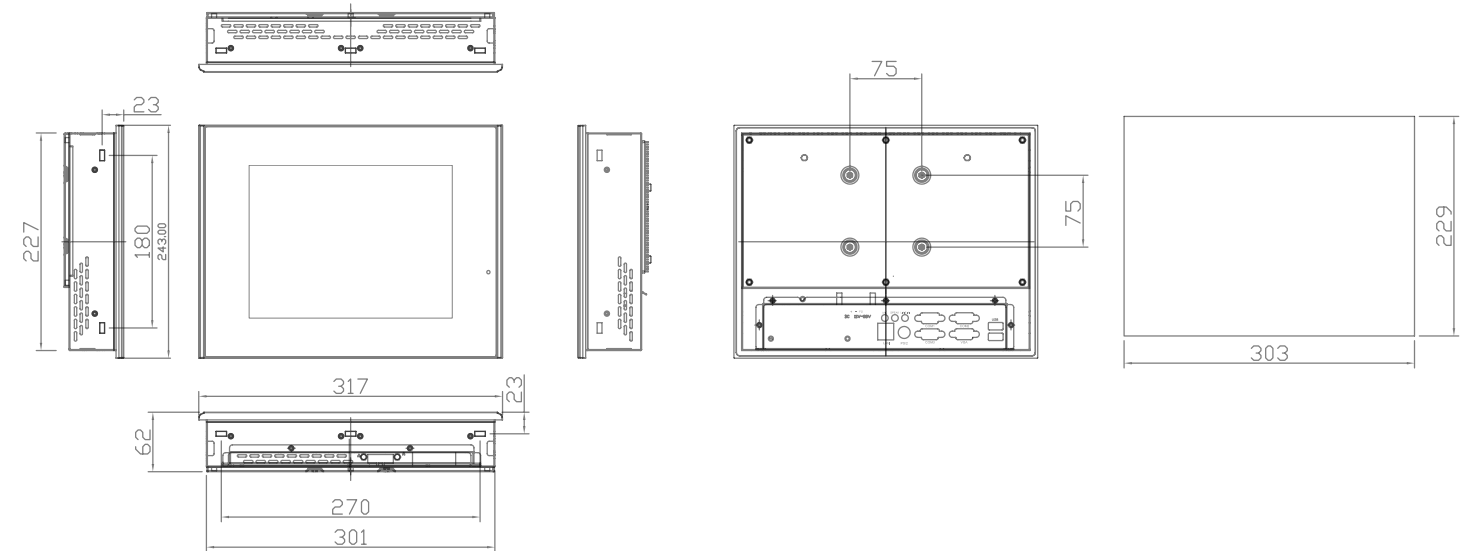
LCD	
Display Type	10.4" TFT-LCD
Max. Resolution	800x600
Max. Color	262K
Luminance (cd/m ²)	250
View Angle	H:130° / V:110°
Backlight Lifetime	20,000hrs

Touch Screen	
Type	Analog resistive
Light Transmission	80%

Power Supply	
Power Input	DC 9~32V

Mechanical	
Construction	Plastic molding housing
Color	Black
IP Rating	NEMA 4 / IP 65 compliant front panel
Mounting	Panel / VESA 75x75 Mount
Dimension	317(W)x243(H)x58(D) mm

Dimension



Environmental	
Operating Temperature	0~50 °C
Storage Temperature	-20~60 °C
Storage Humidity	10~90% @40 °C, non-condensing
Certificate	Meet CE/FCC Class A

Ordering Information	
AHM-6108	10.4" Intel Atom Z510 Low Power Fanless HMI w/1GB DDR2 SDRAM, Touch Screen