

Industrial Computing Products and Services

Panel PC's



Industrial PC's



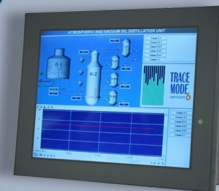
Electronic Design



SBC's



Industrial Displays



Why Choose DSL?

- ✓ Lifetime technical support
- ✓ Fully customisable products
- ✓ Product branding (bezel colours + logos)
- ✓ Free pre-installation of OS and software

Our Services

- ✓ Electronic Design
- ✓ Production Management
- ✓ Assembly and test
- ✓ Bespoke BIOS creation



sales@dsl-ltd.co.uk

or call us on +44 (0)1462 675530





Features



- Fanless Design
- Intel Atom Z510P 1.1GHz CPU built-in, upgradable to Z530P 1.6GHz Processor
- 1GB DDR2 400MHz DRAM built-in
- 9~32V DC Wide Range Power Input
- Front Panel IP65
- Support m-SATA Device
- Sealed Resistive Touch Screen

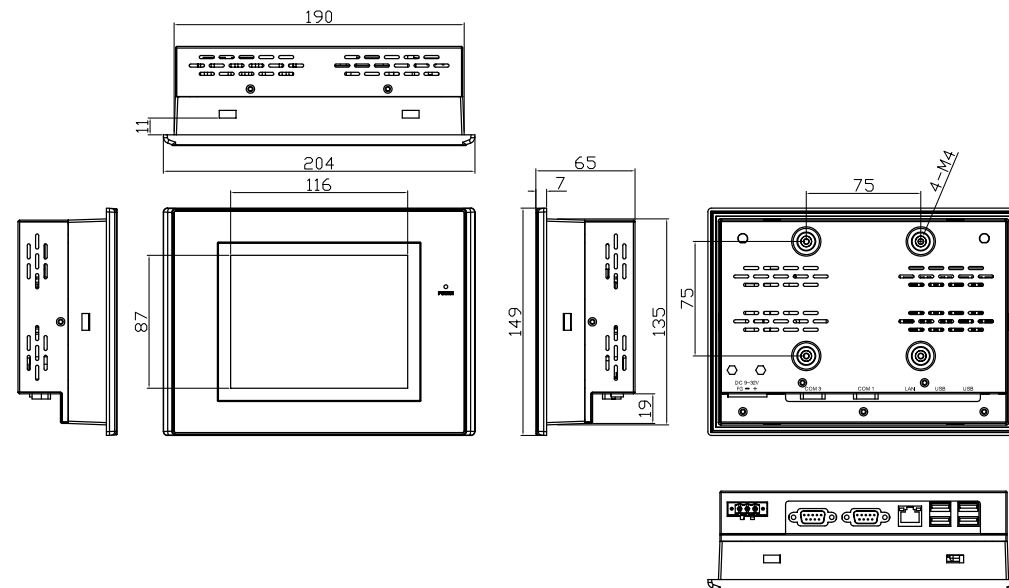
Specifications

System	
CPU	Intel Atom Z510P 1.1GHz CPU built-in, upgradable to Z530P 1.6GHz Processor
DRAM	1GB DDR2 400MHz DRAM built-in default
Storage	1 x 2.5" SATA HDD / m-SATA
Rear side I/O port	<ul style="list-style-type: none"> • 4 x USB 2.0 Connectors • 1 x RJ-45 LAN Connector • 1 x DB-9 RS232 (COM 3) • 1 x DB-9 RS232/422/485 (COM 1) Default:RS-485 • 1 x 3 Pin DC Power Input Terminal Block
Touch Screen	Analog Resistive Type
Power supply	9~32V DC

Display	
LCD	5.7" Color TFT
Luminance (cdm ²)	400
Contrast Ratio	300:1
Max. Colors	262K
Resolution	640x480
Viewing angle	140/100
Backlight Lifetime	40,000 hrs

Mechanical	
Construction	Plastic Molding Front Panel and Steel Housing
Dimensions (W)x(H)x(D) mm	204x149x65
Ratings	204x149x65
Mounting	Panel and VESA 75 Mount

Dimension



Environmental	
Operating Temperature	0~50°C
Storage Temperature	-20~60°C
Storage Humidity	10~90% @40°C, non-condensing
Certificate	CE/FCC Class A