



DATA SOUND - LABORATORIES -

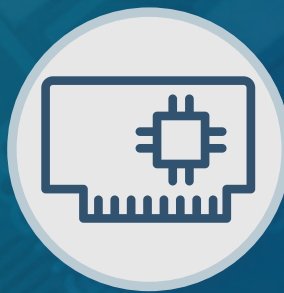
.....
EMBEDDING THE FUTURE



**Electronic
Design**



**Panel
PC / HMI**



**Single Board
Computer**



**Industrial
PC**

Why choose DSL?

- Over 25 Years Industry Experience
- 5 Years Warranty on all Products
- Evaluation Products Available
- Lifetime Technical Support

Our Services

- Electronic Design
- Production Management
- Assembly and Test
- Bespoke BIOS Creation
- Industrial Embedded PC Solutions



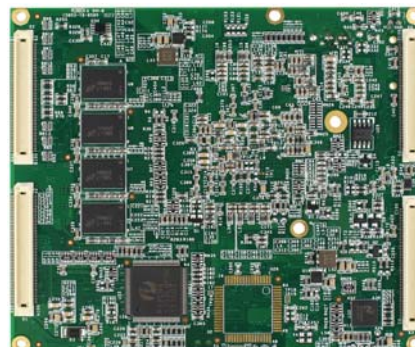
Call us on +44(0)1462 675530



Email us at sales@dsl-ltd.co.uk



www.dsl-ltd.co.uk



Unit: mm

Specifications

Processor	DM&P SoC Vortex86DX3- 1GHz Real Time Clock with Lithium Battery Backup
Cache	L1:32K I-Cache, 32K D-Cache, L2: 512KB Cache
VGA	Integrated 2D VGA chipset with Dual display Support (VGA + LVDS) Share 16MB to 256MB system memory 18/24-bit Single channel LVDS 24-bit Dual channel LVDS (Optional) VGA: Maximum resolution up to 1920x1080 LVDS(Single): Maximum resolution up to 1024x768 LVDS(Dual): Maximum resolution up to 1920x1080
System Memory	1/2GB DDR3 Onboard
BIOS	AMI BIOS
Expansion Bus	PCI, ISA and I ² C
Watchdog Timer	Software programmable from 30.5μ sec.to 512 sec. x 2 sets (Watchdog 1 fully compatible with M6117D)
LAN	Realtek 8111F 10/100/1000Mbps Ethernet (Default 10/100 mode)
Audio	HD Audio
I/O Interface	SATA x1 Enhanced IDE (UltraDMA-100/66/33) x1 Serial port x2 USB (Ver2.0) x4 Parallel port x1 (Optional)
Connectors	SATA 7-pin for SATA x1 1.25mm 10-pin box header for GbE x1
Power Requirement	Single Voltage +5V @ (TBD)
Dimensions (L x W)	114 X 95mm (4.5" x 3.7")
Weight	60g
Operating Temperature	-20°C ~ +70°C -40°C ~ +85°C (Optional)
Operating System Support	DOS, CE6.0, CE7.0, Windows XP Professional, Windows Embedded Standard (XPE), POS Ready (WePOS), Embedded Linux, X-Linux, Linux, QNX(BSP), Vxworks(BSP) and FreeBSD

Features

- Vortex86DX3 System-on-Chip
- Fanless Design
- Low Power Consumption
- 1GB DDR3 Onboard
- Extended Operating Temperature: -40°C ~ 85°C (Optional)

Packing List

- VDX3-ETX x1

Ordering Information

- **VDX3-ETX-74IE** Vortex63DX3 ETX CPU Module with 1GB DDR3 /LAN/LVDS/IDE
- **VDX3-ETX-74LE** Vortex63DX3 ETX CPU Module with 1GB DDR3 /LAN/LVDS/LPT
- **VDX3-ETX-53IS** Vortex63DX3 ETX CPU Module with 512MB DDR3 /LAN/LVDS/IDE
- **VDX3-ETX-DEV** IDE version Development Board
- **Heatsink-ETX-D3T** Passive Heat Sink set for VDX3-ETX
- **Heatspreader-ETX-D3T** Heat Spreader set for VDX3-ETX